

# DRILL HOLE SECTION 19 - EAST PIPE

SOUTH WEST

NORTH EAST

682,952mE  
5,545,830mN  
Azimuth 225  
Dip -50

19

Overburden

Limestone

Sea Level 0m

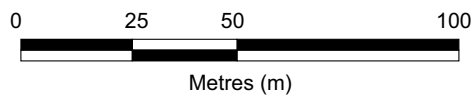
110.0m @ 4.2% Cg

176.0m @ 2.7% Cg

19 - E.O.H.  
291m

-200m

- GRAPHITIC BRECCIA/  
VEINING
- GRAPHITIC  
OVERPRINT
- GRANITE



Cg - Graphitic Carbon