

DRILL HOLE SECTION 21 - EAST PIPE

SOUTH WEST

NORTH EAST

682,890mE
5,545,673mN
Azimuth 45
Dip -50

21

Overburden

Limestone

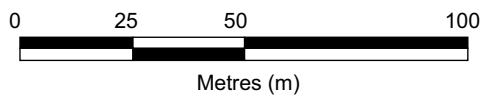
228.0m @ 3.1% Cg

140.6m @ 4.8% Cg

Sea Level 0m

21 - E.O.H.
291m

-200m



**GRAPHITIC BRECCIA/
VEINING**
**GRAPHITIC
OVERPRINT**

Cg - Graphitic Carbon