

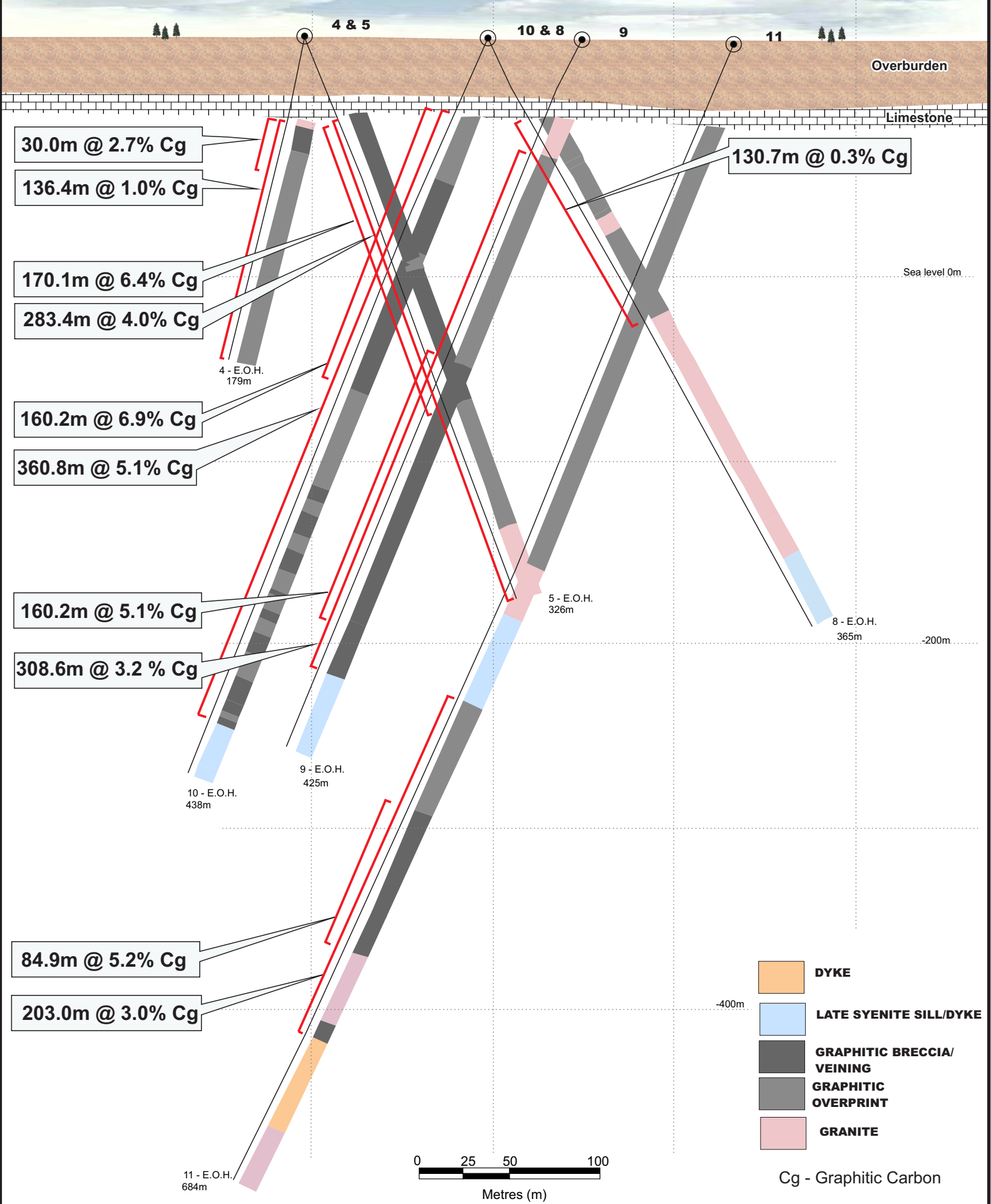
DRILL HOLE SECTIONS 4,5,8,9,10 & 11 - EAST PIPE

SOUTH

NORTH

5,545,700mN

5,545,900mN



4 & 5

10 & 8

9

11

Overburden

Limestone

30.0m @ 2.7% Cg

136.4m @ 1.0% Cg

130.7m @ 0.3% Cg

170.1m @ 6.4% Cg

283.4m @ 4.0% Cg

Sea level 0m

4 - E.O.H.
179m

160.2m @ 6.9% Cg

360.8m @ 5.1% Cg

5 - E.O.H.
326m

160.2m @ 5.1% Cg

308.6m @ 3.2 % Cg

8 - E.O.H.
365m

-200m

10 - E.O.H.
438m

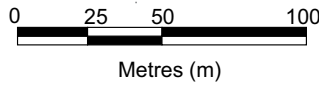
9 - E.O.H.
425m

84.9m @ 5.2% Cg

203.0m @ 3.0% Cg

-400m

11 - E.O.H.
684m



- DYKE**
- LATE SYENITE SILL/DYKE**
- GRAPHITIC BRECCIA/
VEINING**
- GRAPHITIC
OVERPRINT**
- GRANITE**

Cg - Graphitic Carbon